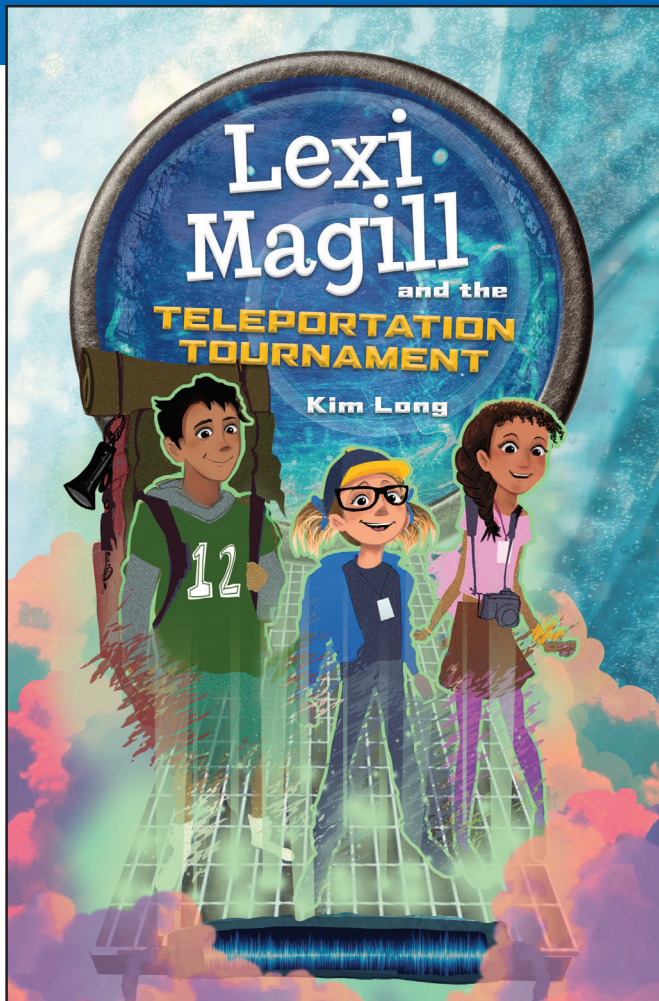


# CURRICULUM GUIDE

978-0-7624-6698-6 hardcover • 978-0-7624-6699-3 e-book



## Lexi Magill and the TELEPORTATION TOURNAMENT

BY Kim Long

*With riddles to solve and messages to decode, this interactive and exciting novel will captivate middle-grade readers!*

Twelve-year-old physics whiz Lexi Magill won't let anything stop her from winning Wisconsin's

Teleportation Tournament—the annual competition where teams teleport around the world solving STEAM puzzles. She needs the prize money to re-enroll in the science academy her parents can no longer afford. Added bonus: she'll be able to reconnect with her best friend Haley.

But Lexi's two teammates put a wrench in her plans. When one misreads a clue that lands the team in the wrong castle in Germany, and the other loses her teleportation medallion in Poland, Lexi wonders what she's gotten herself into. Struggling to keep her team under control as the race rages on, Lexi not only has to figure out how to get back on course (literally), but she must decide how far she's willing to go to win, and who her real friends are.

[kimlongauthor.com](http://kimlongauthor.com)

[runningpress.com/rpkids](http://runningpress.com/rpkids)



RP KIDS

The Common Core State Standards addressed by the discussion questions, activities, and worksheets in this guide are noted throughout. For more information on the Common Core, visit [corestandards.org](http://corestandards.org).

# DISCUSSION QUESTIONS

Unless otherwise noted, all discussion questions meet the following Common Core State Standards:

**CCSS.ELA-LITERACY.RL.3.1; CCSS.ELA-LITERACY.RL.4.1; CCSS.ELA-LITERACY.RL.5.1; CCSS.ELA-LITERACY.RL.6.1; CCSS.ELA-LITERACY.RL.7.1**

- ⊙ At the beginning of the story, Lexi Magill, Wisconsin's top junior scientist, is experiencing the effects of her parents' major downsizing initiative. How has this change in Lexi's life affected her schooling and friendships?
- ⊙ Once she arrives at the Teleportation Tournament, Lexi runs into her friends from the science academy she once attended. Describe the interaction Lexi has with her best friend, Haley, when they meet at the start of the tournament. What signals indicate how the friendship between Lexi and Haley might have changed?
- ⊙ Lexi had to recruit two members from her new school to be a part of her tournament team, Team RAM. How does Lexi's team differ from the other teams in the tournament?
- ⊙ Lexi loves science but has an additional motive for wanting to participate in the Teleportation Tournament. What is the primary motivation for her team members, Ron and Mal, to compete?  
**CCSS.ELA-LITERACY.RL.3.3; CCSS.ELA-LITERACY.RL.4.3; CCSS.ELA-LITERACY.RL.5.3; CCSS.ELA-LITERACY.RL.6.3; CCSS.ELA-LITERACY.RL.7.3**
- ⊙ The Teleportation Tournament is a competition requiring knowledge and problem-solving skills. In order to win, teams also need to understand and follow the rules of the tournament. What are the rules that Dr. Harrison shares with the teams before they start?
- ⊙ Why do you think that Lexi is excited by the prospect of the additional prize for one lucky tournament participant that Dr. Vogt mentions in her opening remarks?  
**CCSS.ELA-LITERACY.RL.3.3; CCSS.ELA-LITERACY.RL.4.3; CCSS.ELA-LITERACY.RL.5.3; CCSS.ELA-LITERACY.RL.6.3; CCSS.ELA-LITERACY.RL.7.3**
- ⊙ There are nine destinations each team must visit and in order to arrive at each spot, the teams must solve clues. What difficulty does Lexi's team face when they try to solve the first clue in the tournament?
- ⊙ One of the clues leads the team to Florence, Italy. What is the unusual element of the clue that they are given under Leonardo Da Vinci's flying machine? What key word in the message helps them figure out how to read the clue? How does the unusual script relate to Da Vinci?

- ⊙ Lexi is in a leadership position on Team RAM as the tournament begins. How does she show her leadership skills when she helps the team solve Mal’s problem at the museum in Poland?
- ⊙ Lexi struggles to feel included at her new school while still longing for her life and friendships at the science academy. How does Lexi’s sense of belonging to a group change as the number of teams in the tournament narrows, and she finds herself in more intense competition with Haley’s team?  
**CCSS.ELA-LITERACY.RL.3.3; CCSS.ELA-LITERACY.RL.4.3; CCSS.ELA-LITERACY.RL.5.3; CCSS.ELA-LITERACY.RL.6.3; CCSS.ELA-LITERACY.RL.7.3**
- ⊙ Why do you think that the author includes the story element of Lexi’s potential Tel-Med deactivation? What does this add to the story?
- ⊙ Team RAM cleverly figures out which of the thirty-nine statues they need to visit in the Labyrinthe de Versailles to quickly solve the puzzle. How does Haley factor into the team’s attempt to solve this puzzle? What is your opinion of this character after this section of the story? Cite examples from the story to support your opinion.
- ⊙ In order to reach the Grace Hopper Memorial Bridge in South Carolina, Team RAM must convert coordinates for longitude and latitude of the destination into decimals. What is revealed about Lexi’s character as she rushes to calculate the equations? What is the result of her efforts and the effect on her team?
- ⊙ After Lexi’s error, she realizes that, “In trying to beat Haley, she had turned into Haley, letting her obsession with winning destroy true friendship.” What story events support Lexi’s realization about herself?  
**CCSS.ELA-LITERACY.RL.3.3; CCSS.ELA-LITERACY.RL.4.3; CCSS.ELA-LITERACY.RL.5.3; CCSS.ELA-LITERACY.RL.6.3; CCSS.ELA-LITERACY.RL.7.3**
- ⊙ Lexi, Mal, and Ron learn an important lesson about what it means to be a team when they are stranded in Tibet. How does Team RAM change from the beginning of the tournament to the time they spend in Tibet? How does Mal try to unify the team? **CCSS.ELA-LITERACY.RL.3.3; CCSS.ELA-LITERACY.RL.4.3; CCSS.ELA-LITERACY.RL.5.3; CCSS.ELA-LITERACY.RL.6.3; CCSS.ELA-LITERACY.RL.7.3**
- ⊙ Trust and communication are important parts of strong friendships. What story events occurred as Team RAM neared the end of the tournament that strengthened the friendship between Lexi, Mal, and Ron?
- ⊙ As the teams work to solve the clue at Fisk University, Lexi realizes that Haley has chosen winning over their friendship. Given how the Teleportation Tournament ends, how do you think Lexi and her team would define winning? Discuss what important lessons Lexi learns about teamwork and friendship through her tournament experience as part of Team RAM.  
**CCSS.ELA-LITERACY.RL.3.2; CCSS.ELA-LITERACY.RL.4.2; CCSS.ELA-LITERACY.RL.5.2; CCSS.ELA-LITERACY.RL.6.2; CCSS.ELA-LITERACY.RL.7.2**